



## THE USE OF "4-D MEAT" IN THE GREYHOUND RACING INDUSTRY

### "4-D" Meat is Used By the Dog Racing Industry to Reduce Costs



4-D Meat at Tucson Greyhound Park, 2010

At commercial racetracks across the country, greyhounds are fed a diet based on "4-D" meat.<sup>1</sup> This is meat derived from dying, diseased, disabled and dead livestock that has been deemed unfit for human consumption.<sup>2</sup> The United States Department of Agriculture requires that charcoal be added to this meat to discourage human use.<sup>3</sup>

According to an industry handbook, 4-D meat is used at commercial dog tracks because "it is the most economically feasible for the Greyhound industry at this time."<sup>4</sup>

### Problems Associated with the Use of "4-D" Meat

As a result of eating 4-D meat, dogs can be exposed to serious pathogens such as *Salmonella*.<sup>5</sup> In addition, the use of 4-D meat can lead to false drug positives due to drug residues that dogs ingest and pass into the urine.<sup>6</sup>

Even the mink industry has discouraged the use of meat from downer cow carcasses, due to outbreaks of Transmissible Mink Encephalopathy, a neurological disease that causes gray matter in the brain to become riddled with holes.<sup>7</sup>

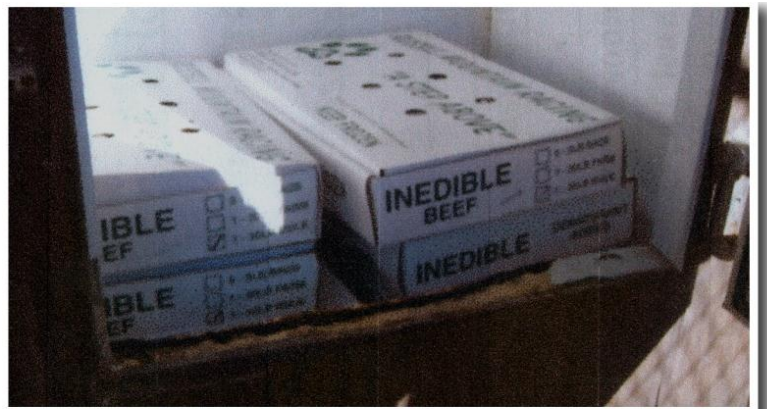


Photo by the New Hampshire Racing and Charitable Gaming Commission, 2008

### "4-D" Meat is Fed to Greyhounds Raw

The dog racing industry defends the use of 4-D meat by claiming that it is also used by commercial pet food companies. While it is true that 4-D meat may be found in commercial pet foods, the use of 4-D meat at commercial dog tracks is distinctive because it is fed to dogs raw. Cooking meat destroys bacteria, but greyhound trainers are reluctant to do so for fear of negatively impacting racing performance.

1 See generally <http://www.wonderlandgreyhound.com> (last visited Aug. 15, 2007) (on file with author).

2 21 USC §644.

3 Linda L. Blythe, James R. Gannon, A. Morrie Craig & Desmond P. Fegan, *Care of the Racing and Retired Greyhound* 151, American Greyhound Council (2007).

4 *Ibid.*

5 *Ibid.*

6 *Ibid.*

7 Tawnie K. Bailey & John R. Gorham, Transmissible Mink Encephalopathy, *Fur Rancher Magazine*, Volume 84, Issue No. 3, 2003, at 4 (on file with author).